

Enhanced Performance: Recessed Motorized Patient Exam Lights



Denver Children's Hospital
Denver, Colorado
Architects: NBBJ
Lighting: **RR01208 - OPTILITE™** (see pg 2)
Also shown: **RR00957** - warming light

Features:

- Patented instantaneous and precise adjustment of light direction and intensity with **infrared remote and wall control**
- **25,600 footcandles** of shadow free illumination from multiple lamp and two luminaire systems
- Dichroic (cold mirrored) reflectors transmit **70% less heat**, assuring patient and practitioner comfort
- Optics provide up to **60° high angle (near horizontal) illumination** for optimal visualization of deep body cavities (**INFRALITE® 60 Series**)
- Maximum and reliable performance ensured by **precision machined gimbal assembly** and DCB lamp base
- **Dual or single site illumination**
- **Inconspicuous fully recessed** luminaires with smooth flare trim and lens are easy to clean and harmonize with room decor
- Convenient **single-hand operation** using either the infrared remote or wall control
- Accurate tissue color rendering from high output **100 CRI tungsten halogen lamps**

THE KIRLIN COMPANY

3401 East Jefferson Avenue • Detroit, MI 48207-4232
313-259-6400 • FAX 313-259-3121 • info@kirlinlighting.com • www.kirlinlighting.com

Recessed Motorized Patient Exam Lights

For more information, including specification sheets and photometry, on these and all other Kirlin products, please visit www.kirlinlighting.com or call your local Kirlin Sales Representative for the **Healthcare Facility & Patient Lighting catalog (03HC)**.

INFRALITE® DX

Features (per luminaire)

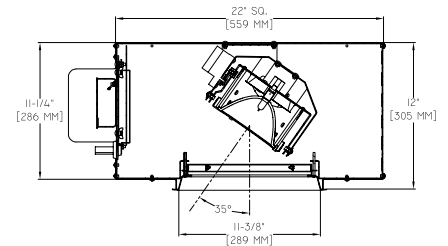
- Tilt up to 35°
- 360° horizontal adjustability
- 250W 22 volt TH DCB T4 lamp
- Cold mirrored reflector
- RR01200 - two luminaire system
- RR01201 - one luminaire system



Performance

25,600 fcs/pair
Ceiling height: 8 ft
Luminaire spacing: 4 ft

Dimensions

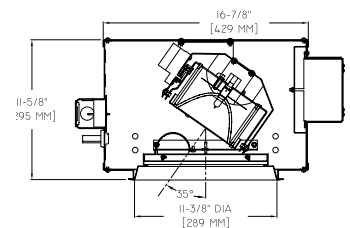


INFRALITE®

- Tilt up to 35°
- 360° horizontal adjustability
- 150W 22 volt TH DCB T4 lamp
- Cold mirrored reflector
- RR01202 - two luminaire system
- RR01203 - one luminaire system



18,100 fcs/pair
Ceiling height: 8 ft
Luminaire spacing: 4 ft

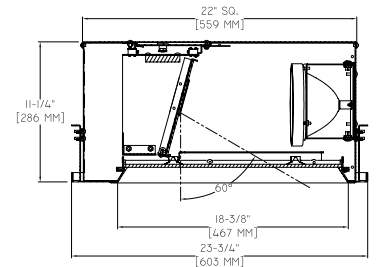


INFRALITE® 60

- Tilt up to 60° (ideal for LDRs)
- 45° horizontal adjustability
- 2-150W 22 volt TH DCB T4 lamps
- 2 cold mirrored reflectors
- RS01704 - two luminaire system
- RS01705 - one luminaire system



7800 fcs/pair
Ceiling height: 8 ft
Setback from target: 6 ft
Luminaire spacing: 4 ft

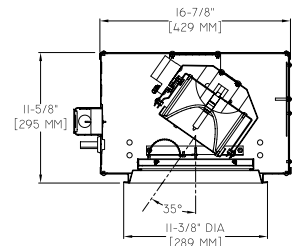


OPTILITE™

- Tilt up to 35°
- 360° horizontal adjustability
- 150W 120 volt TH DCB T4 lamp
- Cold mirrored reflector
- RR01206 - two luminaire system
- RR01207 - one luminaire system
- RR01208 - one luminaire system (linear sweep)



4900 fcs/pair
Ceiling height: 8 ft
Luminaire spacing: 4 ft

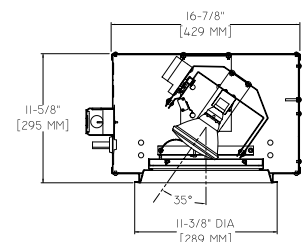


SPOTLITE™

- Tilt up to 35°
- 360° horizontal adjustability
- 250W 120 volt TH PAR38 lamp
- RR01209 - two luminaire system
- RR01210 - one luminaire system
- RR01211 - one luminaire system (linear sweep)



3300 fcs/pair
Ceiling height: 8 ft
Luminaire spacing: 4 ft



THE KIRLIN COMPANY

3401 East Jefferson Avenue • Detroit, MI 48207-4232
313-259-6400 • FAX 313-259-3121 • info@kirlinlighting.com • www.kirlinlighting.com